



Bringing industrial quality to the irrigation industry

Park Management System

Waterman’s park management system is a combination of on site control hardware and central software. The system is in essence an industrial process controller with a fully functional irrigation controller combined with monitoring and control functions for a variety of additional devices.

Each system is made up of a local control cubicle located in the park that houses the controls and is linked to a central control package via mobile phone or radio technology

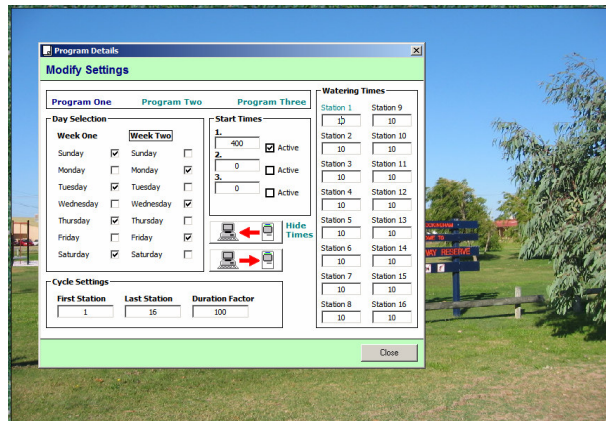
Using its on board touch screen operator interface this controller is extremely user friendly despite its wide array of functionality



Local control panel with bore head

Park management system features

- Local controller mounted in either polycarbonate enclosure or weatherproof aluminium cubicle
- Irrigation control for up to 100 stations as part of 100 groups
- Pump control for up to three pumps used in combination or separate.
- Control of area lighting with lamp failure monitoring
- Control of electric BBQs with vandal protection shut down
- Control of fountains and aerators
- Mobile phone remote control (GSM, CDMA and GPRS)
- Facility to connect to a radio based hub system where the main controller connects to a number of outlying areas using radio
- Extensive monitoring of water values (level, pressure, flow, pH, temperature)
- Local control using user friendly touch screen
- Complete weather station or rain/light sensor only for water and energy savings
- Totalisation of water and energy consumption for each separate usage group
- Central Software package (Waterman Central) that interacts with other Windows based packages.
- Will cater for 258 parks



Waterman Central software

Park Management System, another quality product from Waterman Irrigation

Contact:

Waterman Irrigation
 Phone: +618 9300 1844
 Fax: +618 9300 1846